

ACRY-LINE SIL 1MM

ACRYLIC EMULSION BASED DECORATIVE STRIPE PATTERN SILICONE EXTERIOR COATING

DEFINITION

Acrylic emulsion based, waterborne, silicone added, applied and patterned by trowel, and homogenous particule distributed, decorative exterior coating material.

PROPERTIES

ACRY-LINE SIL 1 MM is a stripe pattern, decorative exterior coating material which is perfectly resistant to abrasive and variable weather conditions. The general properties are;

- High resistance to variable weather conditions
- High alkali resistance
- High UV resistance
- High water absorbtion
- High water-repellency

AREAS OF APPLICATION

ACRY-LINE SIL 1 MM can be applied and used safely in all interior and exterior areas.

SURFACE PREPARATION

The surfaces should be cleaned of dust, stain, and impurities. The dusty and weak surfaces should be scratched and cleaned out as well as the swelling and limy surfaces. Decopaste Ex-0250 or Dekonar group should be applied in case of a repairment. For the concrete surfaces, C-Bond primer should be applied prior to the application of putty or grout.

APPLICATION

Before the application of ACRY-LINE SIL 1 MM, the surfaces should be primed by Byprime Sil and Byprime pigmented (dilution by % 5-10) by roll or airless spray gun as one layer. For the interior limy surfaces, it is recommended to apply Byprime-GP. It is applied after priming and patterned by plastic pattern trowel.

PACKAGING AND STORAGE

ACRY-LINE SIL 1 MM is produced in 25 kg plastic pails. The goods should be stored in clean and dry areas and kept away from sun, rain, hot and cold weathers. The unsealed goods can be stored for 12 months.

HEALTH AND SECURITY

S2 Keep out of reach of children.

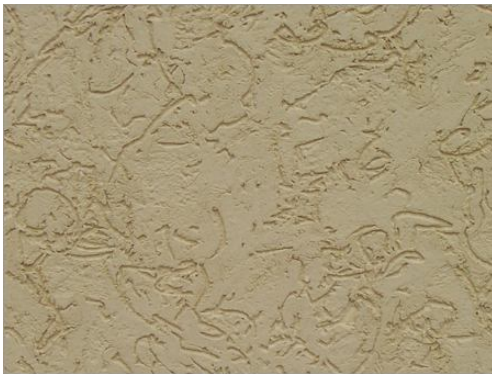
ACRY-LINE SIL 1MM

ACRYLIC EMULSION BASED DECORATIVE STRIPE PATTERN SILICONE EXTERIOR COATING

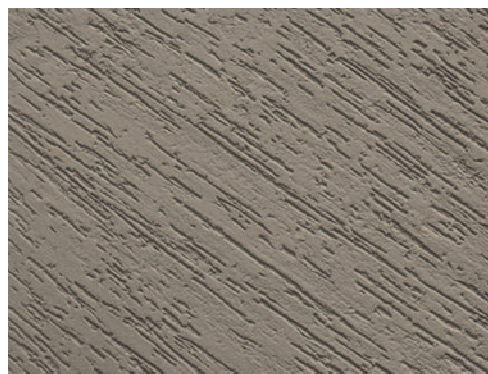
TECHNICAL DATA

Class:	TS EN 1062-1: G ₃ -E ₅ -S ₃ -V ₂ -W ₃ -A ₀ -C ₀			
Consumption:	Depending on the pattern and surface; 1,75-2,25 kg/m ²			
	CLASS	TS EN 1062-1 Std	ACRY-LINE SIL 1 MM	STD NR
Glossiness (G)	G ₂	G>10(85°)	<15	TS EN ISO 2813
Film Thickness (µm)	E ₅	E>400	>400	TS EN 1062-1
Particle Size (µm)	S ₃	S<1500	<1200	TS EN ISO 1524
Vapour Transfer Rate (m)	V ₁	Sd<0,14	Sd<0,20	TS EN ISO 7783-2
Water Transfer Rate (kg/m².h^{0.5})	W ₃	W≤0,1	W≤0,1	TS EN 1062-3
Viscosity (Penetrometre, m/m)			300±20	TAL-058
Density (g/cm³)			1,70±0,2	TAL-001
pH			8-9	TAL-004

PATTERN



ACRY-LINE SIL 1 MM circular trowel application



ACRY-LINE SIL 1 MM linear trowel application